

Series Number:

4760

Type:
Mini

Stand:
Bench Top

Mounting Style:
**Moveable or
Fixed Head**

Sizes, mL:
100-600

Standard Pressure
MAWP Rating, psi (bar):
3000 (200)

High Pressure (HP)
MAWP Rating, psi (bar):
2000 (138)

Standard Maximum
Operating Temp., °C:
225 w/ FKM O-ring
300 w/ FFKM O-ring
350 w/ PTFE Flat Gasket

High Temperature (HT) /
Maximum Operating
Temperature, °C:
500 w/ FG Flat Gasket

Series 4760 Pressure Vessels, 100-600 mL

These are the most popular of our small general purpose vessels. Parr offers a range of sizes large enough to work with significant sample sizes, yet small enough to be handled with ease by all operators.

They are made in both fixed head and moveable vessel styles and are available with an FKM O-ring seal for operating temperatures to 225 °C, and FFKM O-ring for temperatures to 300 °C, or with a flat, PTFE gasket for operating temperatures up to 350 °C maximum.

Choosing the high temperature option (HT) boosts the maximum temperature to 500 °C, but reduces the MAWP to 2000 psi (138 bar). Standard temperature vessels can be converted to high temperature vessels (500 °C max temperature and 2000 psi MAWP) by changing the head assembly (contains cone connections, high temperature valves, and Grafoil® gasket) replacing the heater with a ceramic fiber heater and replacing the split ring. Contact Parr for details.

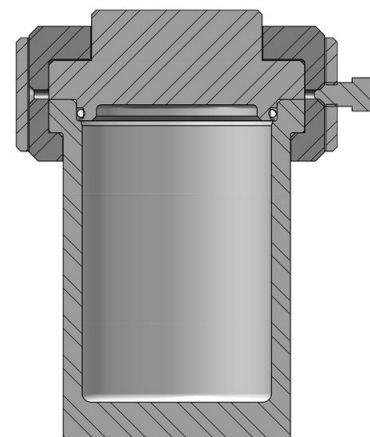
Although internal and external space is limited on these small vessels, custom ports and fittings are available. All vessels in this series can also be easily

converted from one size to another by simply substituting a longer or shorter cylinder with the corresponding internal fittings and heater.

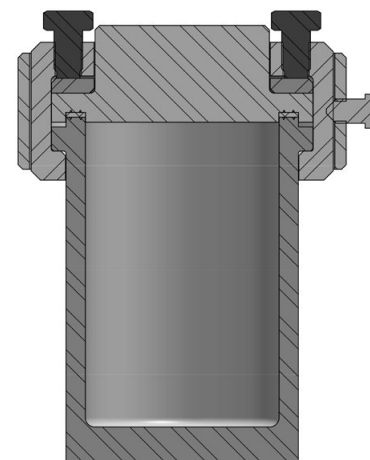
Clamp-on or mantle heaters are available for the Series 4760 moveable vessels. Stands with heaters are offered for the fixed head vessels.

The heaters furnished for non-stirred vessels are the same as those furnished for the stirred versions of the same size vessels. A full description of the different types of heaters is found in our Heater Options section. Automatic temperature controllers are available for most Parr non-stirred vessels.

Custom heaters are also available for these vessels when it is necessary to meet explosion proof requirements, to accommodate installed windows or fittings, or to convert to a welded jacket for steam or oil heating.



**4760Q Cross Section
with O-ring Seal**



**4760 Cross Section
with Flat Gasket Seal**

4760-160mL-VGR-DVD Vessel, BTS Support Stand w/ Heater, and 4838 Controller.



**4760-300mL with plug and rupture disc
assembly installed.**

Series 4760 Pressure Vessel Specifications					
Shaded bar indicates specifications that change within series.					
Model Number	4760				
Approximate Volume, mL	100	160	300	450	600
Maximum Pressure (MAWP)	3000 psi (207 bar, 200 bar for CE orders)				
Maximum Pressure for HT (MAWP)	N/A		2000 psi (138 bar)		
Maximum Temperature					
with FKM O-ring	225 °C				
with FFKM O-ring	300 °C				
with PTFE Flat Gasket	350 °C				
with Grafoil Gasket (HT)	N/A		500 °C		
Vessel Details					
Mounting Style	Moveable or Fixed Head				
Closure	Split-Ring (6 Compression Bolts for Flat Gasket, no Compression Bolts for O-ring)				
Head Opening Mounts	One head opening (1/8" NPT*, 1/4" NPT*, "A" socket, or rupture disc assembly port) Ports for valve, gage, rupture disc, and thermocouple (VGR) Custom port option (Contact our technical sales department to discuss options)				
Maximum Head Openings	7 (Dependent on opening size, and required fittings)				
Valve Connections	1/8" NPT Male, 1/8" NPT Female for HT				
Pressure Gage, Size	3.5 inches				
Range, Standard Temperature	0-3000 psi (207 bar)				
Range, High Temperature	N/A		0 - 2000 psi (138 bar)		
Temperature Measurement	Fixed Thermocouple (Thermowell for special alloys)				
Cooling Coil (optional)	N/A		Single Loop		
Bottom Drain Valve (BDV) (optional)	1/4" NPT (Not available on HT Models)				
* NPT ports are not available for vessels with a High Temperature (HT) rating.					
Stand and Heater (optional)					
Stand Type	Heater Only (standard rated vessels only) and Bench Top Stand with Heater (standard rated vessels and high temperature rated vessels)				
Heater Style (Standard Temperature)	Clamp-on Band		Rigid Mantle		
Heater Power, Watts	525		510	590	780
Maximum Load, amps (115V / 230V), Nominal	5 / 3		5 / 3	5 / 3	7 / 4
Heater Style (High Temperature)	N/A		Ceramic Fiber		
Heater Power, Watts			800	800	1100
Maximum Load, amps (115V / 230V), Nominal			7 / 4	7 / 4	10 / 5
Weight & Dimensions					
Cylinder I.D. x Depth, inches	2.0 x 2.0	2.5 x 2.0	2.5 x 4.0	2.5 x 6.0	2.5 x 8.0
Vessel Assembly w/ Moveable Head Weight, pounds**	14	13	14	15	17
Vessel Assembly w/ Fixed Head Weight, pounds**	15	14	15	17	18
Cylinder Weight, pounds	3.3	2.4	3.7	4.9	6.2
** Vessel Assembly weight varies based on head configuration choice and fitting options. Weights shown are based on vessels with valve, gage, rupture disc, thermocouple, and double valve assembly.					
Other options available. See Ordering Guide, visit www.parrinst.com , or call for more information.					